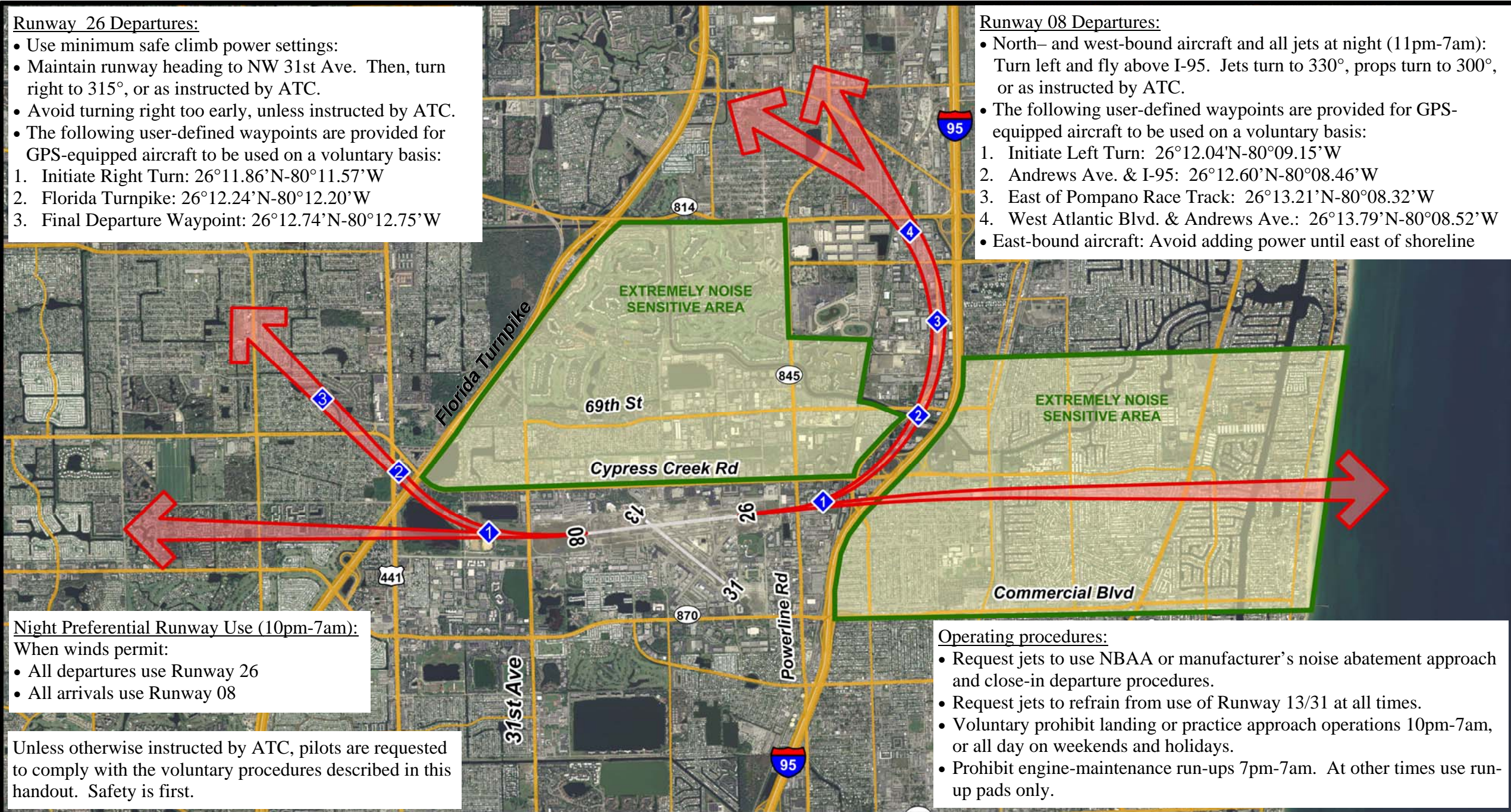


Runway 26 Departures:

- Use minimum safe climb power settings:
- Maintain runway heading to NW 31st Ave. Then, turn right to 315°, or as instructed by ATC.
- Avoid turning right too early, unless instructed by ATC.
- The following user-defined waypoints are provided for GPS-equipped aircraft to be used on a voluntary basis:
 1. Initiate Right Turn: 26°11.86'N-80°11.57'W
 2. Florida Turnpike: 26°12.24'N-80°12.20'W
 3. Final Departure Waypoint: 26°12.74'N-80°12.75'W

Runway 08 Departures:

- North- and west-bound aircraft and all jets at night (11pm-7am): Turn left and fly above I-95. Jets turn to 330°, props turn to 300°, or as instructed by ATC.
- The following user-defined waypoints are provided for GPS-equipped aircraft to be used on a voluntary basis:
 1. Initiate Left Turn: 26°12.04'N-80°09.15'W
 2. Andrews Ave. & I-95: 26°12.60'N-80°08.46'W
 3. East of Pompano Race Track: 26°13.21'N-80°08.32'W
 4. West Atlantic Blvd. & Andrews Ave.: 26°13.79'N-80°08.52'W
- East-bound aircraft: Avoid adding power until east of shoreline



Night Preferential Runway Use (10pm-7am):

- When winds permit:
- All departures use Runway 26
 - All arrivals use Runway 08

Unless otherwise instructed by ATC, pilots are requested to comply with the voluntary procedures described in this handout. Safety is first.

Operating procedures:

- Request jets to use NBAA or manufacturer’s noise abatement approach and close-in departure procedures.
- Request jets to refrain from use of Runway 13/31 at all times.
- Voluntary prohibit landing or practice approach operations 10pm-7am, or all day on weekends and holidays.
- Prohibit engine-maintenance run-ups 7pm-7am. At other times use run-up pads only.



FXE NOISE ABATEMENT PROCEDURES

Fort Lauderdale Executive Airport cares about noise abatement.

